

# Quick-Start Guide









## SpeedStream® Residential Gateway 5450 Four-Port Router

**SIEMENS**

Global network of innovation

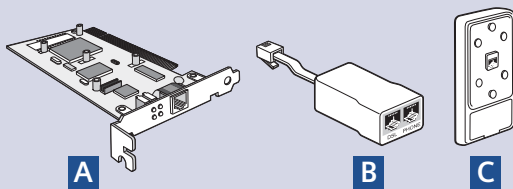
# Before you begin,

Verify that the following items came with your DSL kit:

-  1 SpeedStream® Device
-  2 Documentation
-  3 Software Manual CD-ROM (Router model only)
-  4 Power supply
-  5 RJ-45 Straight-through Ethernet cable
-  6 RJ-11 DSL cable

Your service provider may include an Ethernet adapter, a line filter, and a wall-mount filter in your DSL kit. If you received any of these items, follow the instructions provided in this guide for basic installation. If you need further assistance installing these items, please contact your service provider.

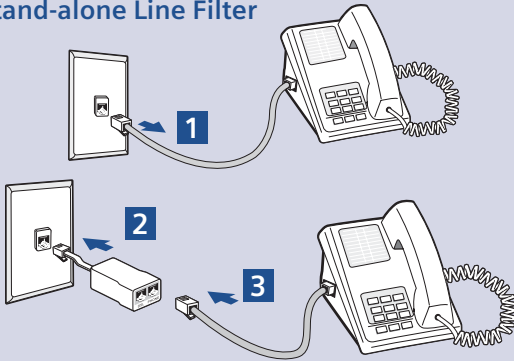
- A PCI Ethernet adapter
- B Line filter(s)
- C Wall-mount filter



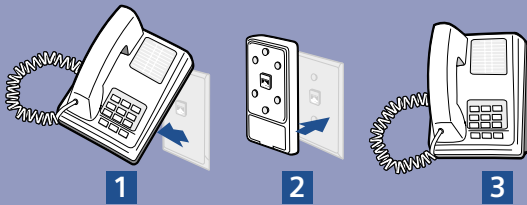
# Step 1 >

## Install Line Filters

### Stand-alone Line Filter



### Wall-mount Filter



Devices such as fax machines, caller ID boxes, or phones that share the same phone line as your DSL account require a line filter, which prevents noise from disrupting the DSL signal on the phone line. Filters can be in the form of a stand-alone line filter or a wall-mount filter.

### Stand-alone Line Filter

For each device that shares the DSL phone line:

1. **Unplug the device's cord from the phone jack.**
2. **Plug the filter into the phone jack.**
3. **Plug the phone cord (or other device cord) into the filter.**

### Wall-mount Filter

For a wall-mount phone, install a wall-mount filter.

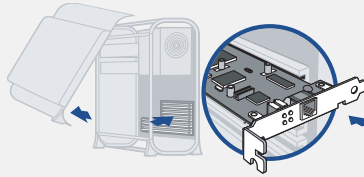
1. **Remove the phone.**
2. **Connect the wall-mount filter to the wall plate.**
3. **Reconnect the phone.**

# Step 2 >

## Ethernet Installation

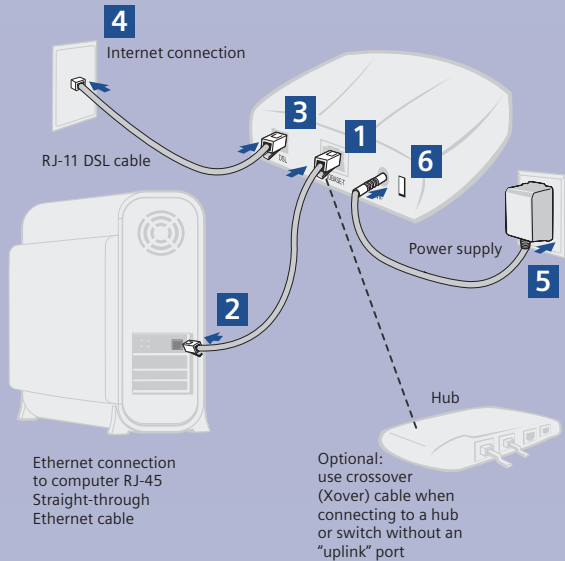
### Install Ethernet Adapter

You will need to install an Ethernet adapter if your computer does not already have one installed. Refer to your Ethernet adapter manufacturer's documentation for complete installation instructions.



### Connect the SpeedStream® Device

1. Connect the straight-through Ethernet cable (RJ-45) to the Ethernet port on the SpeedStream® device (yellow port).
2. Connect the other end of the straight-through Ethernet cable (RJ-45) to the Ethernet port on your computer.
3. Plug the DSL cable (RJ-11) into the DSL port on the SpeedStream® device (gray port).
4. Plug the other end of the DSL cable (RJ-11) into the phone jack.
5. Plug the power adapter into the power outlet and SpeedStream® device (black port).
6. Ensure the SpeedStream® device is powered on (power switch located on right side of back panel).



# Step 3 >

## PC Configuration Procedures

### Windows Configuration

In order to setup the SpeedStream® device, your PC must first be configured to obtain an IP address from a DHCP server. Follow the procedure below:

*Note: The following procedures cover configuration of a PC running Windows® XP. Please refer to the User Guide on the CD-ROM for help configuring other operating systems.*

1. Click **Start > Control Panel**.
2. Double-click the **Network Connections** icon.
3. Double-click your **Network Card**.
4. Click **Properties**.
5. Select **Internet Protocol (TCP/IP)**.
6. Click **Properties**.
7. Select **Obtain an IP address automatically**.
8. Select **Obtain DNS server address automatically**.
9. Click **OK** and exit out of the Control Panel.
10. Configure Internet Access using the procedure that follows.

### Internet Access

Next, make sure your PC will use the SpeedStream® device (and not Dial-Up Networking) when connecting to the Internet. Follow the procedure below:

1. Click **Start > Control Panel**.
2. Double-click the **Internet Options** icon.
3. Click the **Connections** tab.



4. Click **Setup**.



5. Click **Next**.
6. Click **Connect to the Internet**.
7. Click **Next**.
8. Click **Setup my connection manually**.
9. Click **Next**.
10. Select **Connect using a broadband connection that is always on**.
11. Click **Next**.
12. Click **Finish**.
13. Configure the Gateway using the Gateway Configuration procedure that follows.

### Configure the Gateway

Windows Me and XP users: If you have Universal Plug and Play (UPnP) enabled, Windows may detect the SpeedStream® device upon startup and provide a Shortcut to the device on the desktop or system task tray. The icon will be labeled as "Residential Gateway." Double-click the icon and skip to step 3.

1. Start your Web browser. In the Address box, enter the following: **http://speedstream**.
2. Press Enter. The **SpeedStream® Simple Setup Wizard** will launch.
3. At the end of the Setup Wizard, you will be given the option to either connect to the Internet or further configure the optional settings of the gateway.
4. If additional configuration is desired, select the icon for the service or option you wish to configure: the gateway's firewall and security settings, User Profiles and content filtering, or home network options.

*For non-standard configurations or troubleshooting procedures, consult the User Guide on CD-ROM.*

**Congratulations! You have completed the installation of your SpeedStream® device.**

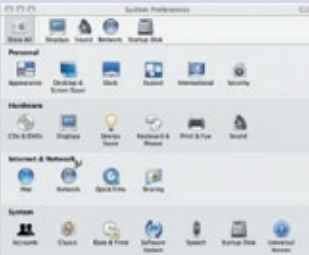
# Macintosh Configuration Procedures

## Macintosh Configuration

In order to setup the SpeedStream® device, your computer must first be configured to obtain an IP address from a DHCP server.

Follow the procedure below for OS X:

1. Click **Apple** -> **System Preferences**.



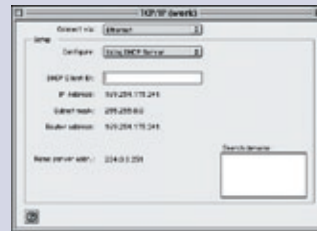
2. Select the **Network** icon under the **Internet & Network** section.



3. Select **Built-in Ethernet** from the **Show** drop-down menu.
4. Select **Using DHCP Server** from the **Configure With** drop-down menu.
5. Click **Apply Now** and exit out of **System Preferences** window.
6. Configure the Gateway using the Gateway Configuration procedure that follows.

Follow the procedure below for OS9:

1. Click **Apple** -> **Control Panels** -> **TCP/IP**.



2. Select **Ethernet** from **Connect via** drop-down menu.
3. Select **Using DHCP Server** from the **Configure** drop-down menu.
4. Close window and save changes.
5. Configure the Gateway using the Gateway Configuration procedure that follows.

## Configure the Gateway






If your PC has not been connected to a broadband modem or other network device, you will need to perform the PC configuration procedure below. Remember to restart each PC when finished.

1. Start your Web browser. In the Address box, enter the following: <http://speedstream>.
2. Press Enter. The **SpeedStream® Simple Setup Wizard** will launch.
3. At the end of the Setup Wizard, you will be given the option to either connect to the Internet or further configure the optional settings of the gateway.
4. If additional configuration is desired, select the icon for the service or option you wish to configure: the gateway's firewall and security settings, User Profiles and content filtering, or home network options.

For non-standard configurations or troubleshooting procedures, consult the User Guide on CD-ROM.

**Congratulations! You have completed the installation of your SpeedStream® device.**

# Troubleshooting

LED	Off 	Green 	Blinking Green 	Blinking Red/Green 	Red 
Power	- Power not applied	Normal system operation	N/A	Flash write in progress	- POST in progress - POST error occurred (if persistent)
Ethernet	- Power not applied - No link	Normal Ethernet operation, Link okay	User traffic flowing in either direction	N/A	N/A
DSL	- Power not applied - DSL signal not detected	DSL line is trained and ready for traffic	Steady blinking- DSL line is attempting to train	N/A	Configurable
Internet	- Power not applied - Bridge mode - No DSL link	- DSL link is up + WAN interface is up + WAN interface has IP Address	N/A	N/A	IP connection failure
Activity	- Power not applied - No WAN or LAN activity	N/A	LAN user traffic flowing in either direction	N/A	N/A

**SIEMENS**

Global network of innovation

Siemens Subscriber Networks, Inc.  
4849 Alpha Road  
Dallas, TX 75244  
(972) 852-1000  
Fax (972) 852-1001  
usa.800siemens@icn.siemens.com  
<http://www.icn.siemens.com/subscriber>

Copyright © 2004 SIEMENS SUBSCRIBER NETWORKS, INC. All rights reserved. Siemens and the Siemens logo are trademarks of Siemens AG, Germany. All other trademarks are held by their respective companies. Siemens reserves the right to make changes to product specifications at any time without notice.